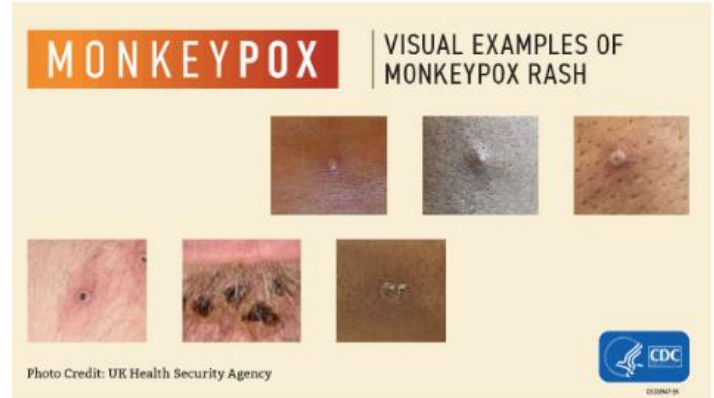
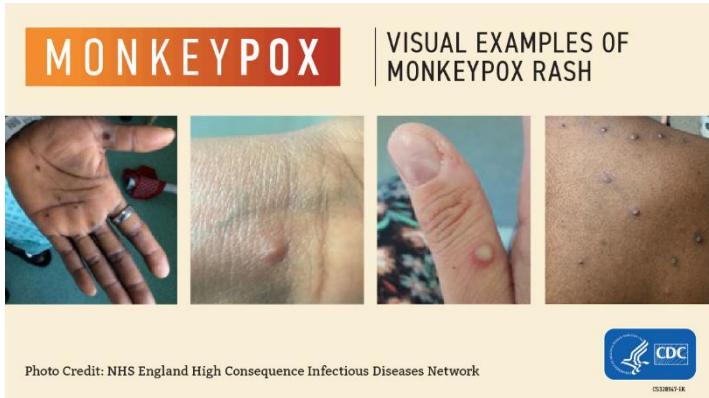


# AUCC Student Health and Wellness (SHWC)

## About Monkeypox

Monkeypox is a virus that can cause flu-like symptoms and a rash. Human-to-human transmission of monkeypox virus occurs by direct contact with lesions, infected body fluids, touching objects, fabrics (clothing, bedding, or towels), and surfaces that have been used by someone with monkeypox, or from exposure to respiratory secretions during prolonged face-to-face contact. Reports of human-to-human transmission include close contact with a person with monkeypox symptoms. A person is considered infectious until all scabs separate and a fresh layer of skin is formed.



## Testing

Testing is available at [AUCC Student Health & Wellness Center \(SHWC\)](#) for students with monkeypox symptoms. The providers can promptly diagnose and manage suspected and confirmed cases as well as provide guidance for exposed contacts. Schedule a same-day appointment through the [Patient Portal](#) or by calling [\(404\) 756-1241](#).

## Positive Result

Students who test positive for monkeypox can spread the virus to others from the time symptoms start until the rash has fully healed and a fresh layer of skin has formed. The illness typically lasts 2-4 weeks. During this time, students must isolate off campus and follow the items below before returning. Students must:

1. Submit a letter from a medical provider stating the student has completed the required isolation period and may return to normal campus activities.
2. Schedule a telehealth appointment with the [AUCC SHWC](#) medical provider who will manage the student's medical care once returned to campus
3. Wait until the campus provides written instruction informing the student of when he/she can return

## Exposure

Students exposed to an individual confirmed to have monkeypox must inform their campus medical team immediately **and begin monitoring their symptoms twice a day for 21 days** after their last exposure using the monkeypox [self-reporting exposure form](#). Student must also schedule an information visit with [AUCC SHWC](#) medical provider through the [Patient Portal](#) or by calling [\(404\) 756-1241](#).

## Symptoms

Monkeypox symptoms usually start within three weeks of exposure to the virus, and may include:

- Rash or clear pus-filled bumps
- Fever
- Chills
- Headache

- Muscle aches
- Exhaustion
- Swollen lymph nodes

## **Vaccination**

Currently, the Atlanta University Center Consortium member institutions (AUCC) do not have access to the monkeypox vaccination at this time. Vaccinations in Georgia are limited, and as such, the Georgia Department of Health (GDPH) is prioritizing vaccine distribution in five metro counties - [Fulton](#), [DeKalb](#), [Gwinnett](#), [Cobb](#), and [Clayton](#). Because demand outweighs supply, GDPH is following the recommendations from the Centers for Disease Control and Prevention (CDC) and prioritizing monkeypox vaccine for individuals at high risk. Vaccination may be recommended for people who are close personal contacts of people with monkeypox virus, individuals who may have been exposed to monkeypox, or people who have increased risk of being exposed to the virus.

## **Prevention and Risk Reduction**

Individuals can minimize their risk for exposure by:

- Asking sexual partners whether they have a rash or other symptoms of monkeypox.
- Avoiding skin-to-skin contact with someone who has a rash or other monkeypox symptoms and those diagnosed with monkeypox.
- Not sharing bedding, towels, clothing, utensils, or cups with a person with monkeypox.
- Wash your hands often with soap and water or use an alcohol-based hand sanitizer

Students should reach out to SHWC if exposed or experiencing symptoms.

If you would like to speak with someone to discuss your concerns around exposure risks and prevention strategies, please email AUCC epidemiologist [here](#), the Georgia Department of Public Health at 866-PUB-HLTH (866-782-4584) or call SHWC at [\(404\) 756-1241](#) to speak with a medical provider.

## **Learn more about monkeypox:**

[Centers for Disease Control and Prevention](#)  
[Georgia Department of Public Health](#)  
[Fulton County Board of Health](#)  
[Atlanta University Center Consortium](#)